

Camelion®

Power Supply

Mobile Power
USB Wall Charger
USB Car Charger

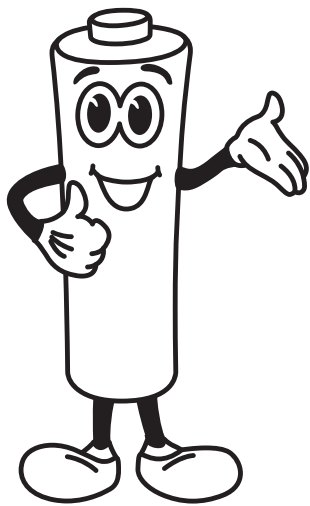


Product Catalogue 2023

www.camelionbattery.com



More Energy Solutions



**Try us out
today!**

- Mobile Power
- USB Wall Charger
- USB Car Charger

Content

Mobile Power

PS735	4
PS733	4
PS734	5
PS726	5
PS710	6
PS661	6
PSS160	7
PSS100	7

USB Car Charger

DD833	13
DD832	13
DD831	14
DD822C	14
DD823A	15
DD822A	15
DD803S	16
DD803A	16

USB Wall Charger

AD612	8
AD611	8
AD606	9
AD605	9
AD602A	10
AD601A	10
AD585A	11
AD585T	11
AD581	12
AD582	12



Mobile Power

Camelion Mobile Power offers you a series of fast, easy and reliable power sources for your mobile devices. Integrated with superior quality battery cells, we ensure you reliable mobile power products of long life that are fully compliant with international safety standards.

PS735



PS735-200CBH



Main Features

- 20000mAh large power capacity
- 22.5W fast output power
- 18W QC / 18W PD fast input
- 3 devices charging at once
- Over-charge protection, over-discharge protection, over current protection, short-circuit protection, high temperature protection
- Easy-to-monitor power indicator
- Compact and powerful

Specifications

Battery: 3.7V, 20000mAh, 74Wh, rechargeable Li-polymer battery
Input: 18W (Max)
 Micro USB: 5V --- 2A, 9V --- 2A, 12V --- 1.5A
 USB-C: 5V --- 3A, 9V --- 2A, 12V --- 1.5A
Output: 22.5W (Max)
 USB-A1 / A2: 5V --- 4.5A, 9V --- 2A, 12V --- 1.5A 22.5W
 USB-C: 5V --- 3A, 9V --- 2.22A, 12V --- 1.67A 20W
 USB-A+USB-C: 5V --- 3A

Packaging

Inner Carton	Weight (g)	275
	Dimensions L x W x H (cm)	/
	Packs / Inner Carton	/
	Net Weight (kg)	/
Outer Carton	Gross Weight (kg)	/
	Dimensions L x W x H (cm)	/
	Volume (cbm)	/
	Packs / Carton	/

PS733



PS733-100CBH



Main Features

- Bi-directional fast charge technology
- 3 devices charging at once
- Support QC/PD fast output
- Dual 18W quick input ports
- Over-charge protection, over-discharge protection, over current protection, short-circuit protection, over temperature protection
- Easy-to-monitor power indicator
- Compact and powerful

Specifications

Battery: 3.7V, 10000mAh, 37Wh, rechargeable Li-polymer bBattery
Input: Micro USB/USB-C: 5V --- 2A, 9V --- 2A, 12V --- 1.5A
Output: 18W (Max)
 USB-A1/A2: 5V --- 2.4A, 9V --- 2A, 12V ---1.5A QC3.0
 USB-C: 5V --- 2.4A, 9V --- 2A,12V ---1.5A PD3.0
 USB-A+USB-C: 5V --- 3A

Packaging

Inner Carton	Weight (g)	275
	Dimensions L x W x H (cm)	11 x 21.5 x 1.9
	Packs / Inner Carton	12
	Net Weight (kg)	/
Outer Carton	Gross Weight (kg)	/
	Dimensions L x W x H (cm)	38.8 x 13.5 x 12.2
	Volume (cbm)	0.0306
	Packs / Carton	48

Mobile Power

PS734



PS734-200CBH



Main Features

- 20000mAh large power capacity
- Dual input & dual output ports
- Compact and portable
- LED digital power indicator
- Over-charge protection, over-discharge protection, over current protection, short-circuit protection

Specifications

Battery: 3.7V, 20000mAh, 74Wh, rechargeable Li-polymer battery

Input: Micro USB/USB-C: 5V \pm 2A

Output: 5V \pm 2.1A (Max)

USB-A1: 5V \pm 1.0A

USB-A2: 5V \pm 2.1A

Packaging

	Weight (g)	466.7
	Dimensions L x W x H (cm)	110 x 215 x 31
Inner Carton	Packs / Inner Carton	12
	Net Weight (kg)	/
	Gross Weight (kg)	/
	Dimensions L x W x H (cm)	38.8 x 20.5 x 12.2
Outer Carton	Packs / Carton	24
	Net Weight (kg)	11.2
	Gross Weight (kg)	11.9
	Dimensions L x W x H (cm)	40.5 x 22 x 26.5
	Volume (cbm)	0.0236

PS726



PS726-100CBH



Main Features

- Dual input & dual output ports
- Slim, compact and portable design
- LED power indicator
- Over-charge protection, over-discharge protection, over current protection, short-circuit protection

Specifications

Battery: 3.7V, 10000mAh, 37Wh, rechargeable Li-polymer battery

Input: Micro USB/USB-C: 5V \pm 2A

Output: 5V \pm 2.1A (Max)

USB-A1: 5V \pm 1.0A

USB-A2: 5V \pm 2.1A

Packaging

	Weight (g)	271
	Dimensions L x W x H (cm)	110 x 215 x 19
Inner Carton	Packs / Inner Carton	12
	Net Weight (kg)	/
	Gross Weight (kg)	/
	Dimensions L x W x H (cm)	38.8 x 13.5 x 12.2
Outer Carton	Packs / Carton	48
	Net Weight (kg)	13.2
	Gross Weight (kg)	14
	Dimensions L x W x H (cm)	40.5 x 28.5 x 26.5
	Volume (cbm)	0.0306

Mobile Power

PS710

10000
mAh

2.1A
Output

Dual
Outputs



PS710-100HCB

CE CB FC BC

Main Features

- Dual USB output port
- Overcharge, over-discharge, over-current, short-circuit protection
- LED power indicator
- Ergonomic design, comfortable in hand

Specifications

Battery: 3.7V, 10000mAh, 37Wh, rechargeable Li-polymer battery

Input: 5V \equiv 2A

Output: 5V \equiv 2.1A (Max total)
5V \equiv 2.1A (Each USB)

Packaging

	Weight (g)	268
	Dimensions L x W x H (cm)	11 x 21.5 x 1.9
Inner Carton	Packs / Inner Carton	12
	Net Weight (kg)	/
	Gross Weight (kg)	/
	Dimensions L x W x H (cm)	38.8 x 13.5 x 12.2
Outer Carton	Packs / Carton	48
	Net Weight (kg)	12.86
	Gross Weight (kg)	13.48
	Dimensions L x W x H (cm)	40.5 x 28.5 x 26.5
	Volume (cbm)	0.0305

PS661

10400
mAh

3.1A
Output

Dual
Outputs



PS661-104DB

CE FC

Main Features

- Higher energy density
- Greater power security
- Compatible with most mobile devices
- Dual USB outputs
- Overcharge, over-discharge, over-current, short-circuit protection
- LED power indicator

Specifications

Battery: 3.7V 10400mAh 38.48Wh, rechargeable Li-ion battery

Input: 5V \equiv 2A

Output: 5V \equiv 3.1A Max

Output 1: 5V \equiv 1A

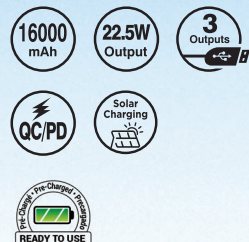
Output 2: 5V \equiv 2.4A

Packaging

	Weight (g)	270
	Dimensions L x W x H (cm)	13 x 23 x 3.5
Inner Carton	Packs / Inner Carton	/
	Net Weight (kg)	/
	Gross Weight (kg)	/
	Dimensions L x W x H (cm)	/
Outer Carton	Packs / Carton	48
	Net Weight (kg)	13
	Gross Weight (kg)	14
	Dimensions L x W x H (cm)	55 x 44 x 25.5
	Volume (cbm)	0.0617

Mobile Power

PSS160



3 devices charging at once

Main Features

- High conversion efficiency
- 3 devices charging at once
- Support QC/PD fast charge
- Excellent dustproof and waterproof rating
- Slim, compact and portable
- Over-charge protection, over-discharge protection, over current protection, short-circuit protection, over temperature protection

Specifications

Battery: 3.7V, 16000mAh, 59.2Wh, rechargeable Li-polymer battery

Input: USB-C: 5V \leq 3A, 9V \leq 2A, 12V \leq 1.5A

Solar: 5.5V \leq 1A (Max)

Output: 22.5W (Max)

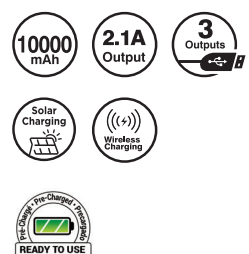
USB-A1/A2: 5V \leq 4.5A, 9V \leq 2A, 12V \leq 1.5A

USB-C: 5V \leq 3A, 9V \leq 2.22A, 12V \leq 1.67A 20W PD3.0

Packaging

	Weight (g)	/
	Dimensions L x W x H (cm)	/
	Packs / Inner Carton	/
	Net Weight (kg)	/
Inner Carton	Gross Weight (kg)	/
	Dimensions L x W x H (cm)	/
	Packs / Carton	/
	Net Weight (kg)	/
Outer Carton	Gross Weight (kg)	/
	Dimensions L x W x H (cm)	/
	Volume (cbm)	/
		/

PSS100



3 devices charging at once

Main Features

- High conversion efficiency
- 3 devices charging at once
- Support 5W wireless charging
- Excellent dustproof and waterproof rating
- Slim, compact and portable design
- Over-charge protection, over-discharge protection, over current protection, short-circuit protection, over temperature protection

Specifications

Battery: 3.7V, 10000mAh, 37Wh, rechargeable Li-polymer battery

Input: Micro: 5V \leq 2A

Solar: 5.5V \leq 0.75A (Max)

Output: 15W (Max)

USB-A1/A2: 5V \leq 2.1A

Wireless Charger: 5W

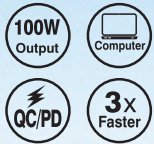
Packaging

	Weight (g)	/
	Dimensions L x W x H (cm)	/
Inner Carton	Packs / Inner Carton	/
	Net Weight (kg)	/
	Gross Weight (kg)	/
	Dimensions L x W x H (cm)	/
Outer Carton	Packs / Carton	/
	Net Weight (kg)	/
	Gross Weight (kg)	/
	Dimensions L x W x H (cm)	/
	Volume (cbm)	/

USB Wall Charger

Camelion Wall Chargers offer fast, reliable and efficient charging at home, the office, and while you travel. They come in different sizes and work with universal voltage. Providing you with a convenient solution to charge your mobile devices wherever you go.

AD612



AD612-CBH

Main Features

- Power for laptop, tablet and most mobile devices
- 100W maximum output power
- Support QC/PD fast charge
- Charge 3 devices at once
- Over-current and short-circuit protection
- Universal compatibility

Specifications

Input: 100-240V~ 50/60Hz 2A Max

Output: 100W Max

USB-C1/C2: 5V ~ 3A, 9V ~ 3A, 12V ~ 3A, 15V ~ 3A, 20V ~ 5A 100W

PPS: 3.3-21V=5A

USB-C3: 5V ~ 3A, 9V ~ 3A, 12V ~ 2.5A, 15V ~ 2A, 20V ~ 1.5A 30W

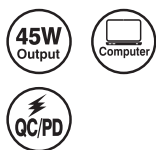
PPS: 3.3-11V ~ 3A

USB-A: 5V ~ 3A, 9V ~ 3A, 12V ~ 2.5A, 15V ~ 2A, 20V ~ 1.5A 30W

Packaging

Hanging Box	Plug:	/
	Weight (g)	/
	Dimensions L x W x H (cm)	/
Inner Carton	Packs / Inner Carton	/
	Net Weight (kg)	/
	Gross Weight (kg)	/
	Dimensions L x W x H (cm)	/
Outer Carton	Packs / Carton	/
	Net Weight (kg)	/
	Gross Weight (kg)	/
	Dimensions L x W x H (cm)	/
	Volume (cbm)	/

AD611



AD611-CBH

Main Features

- Power for laptop, tablet and most mobile devices
- 45W maximum output
- Support QC/PD fast charge
- Charge 2 devices at once
- Over-current and short-circuit protection
- Universal compatibility

Specifications

Input: 100-240V~ 50/60Hz 1.2A Max

Output: 45W Max

USB-C: 5V ~ 3A, 9V ~ 3A, 12V ~ 3A, 15V ~ 3A, 20V ~ 2.25A 45W

PPS: 3.3-11V=3A

USB-A: 5V ~ 3A, 9V ~ 2A, 12V ~ 1.5A 18W

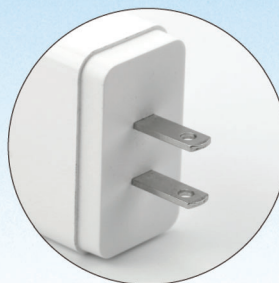
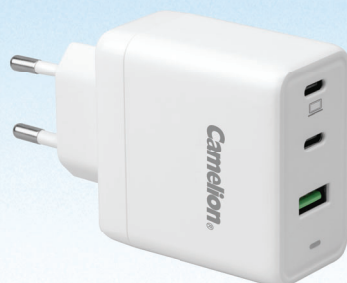
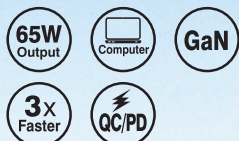
USB-C+USB-A: 30W+12W 42W

Packaging

Hanging Box	Plug:	EU / US
	Weight (g)	80
	Dimensions L x W x H (cm)	8 x 15 x 2.9
Inner Carton	Packs / Inner Carton	24
	Net Weight (kg)	/
	Gross Weight (kg)	/
	Dimensions L x W x H (cm)	38 x 31 x 9.2
Outer Carton	Packs / Carton	48
	Net Weight (kg)	3.84
	Gross Weight (kg)	4.46
	Dimensions L x W x H (cm)	39.5 x 32.5 x 20.5
	Volume (cbm)	0.0263

USB Wall Charger

AD606



AD606-CBH



Main Features

- 65W gan quick charger
- Higher energy efficiency less heat
- Support QC/PD fast charge
- 3 Devices charging at once
- Multi-levels of safety protection
- Intelligent detect & dynamic power allocation

Specifications

Input: 100-240 ~ 50/60Hz, 1.5A Max

Output:

USB-C1: 5V ~ 3A, 9V ~ 3A, 12V ~ 3A, 15V ~ 3A, 20V ~ 3.25A 65W

PPS: 3.3-11V ~ 3A

USB-C2: 5V ~ 3A, 9V ~ 3A, 12V ~ 2.5A, 15V ~ 2A, 20V ~ 1.5A 30W

PPS: 3.3-11V ~ 3A

USB-A: 5V ~ 4.5A, 4.5V ~ 5A, 5V ~ 3A, 9V ~ 3A, 12V ~ 1.5A

USB-C1+USB-C2: 45W+18W (63W)

USB-C1+USB-A: 45W+18W (63W)

USB-C2+USB-A: 5V ~ 3A 15W

USB-C1+USB-C2+USB-A: 45+15W (60W)

Packaging

Hanging Box	Plug:	EU / US
	Weight (g)	/
	Dimensions L x W x H (cm)	/
Inner Carton	Packs / Inner Carton	/
	Net Weight (kg)	/
	Gross Weight (kg)	/
	Dimensions L x W x H (cm)	/
Outer Carton	Packs / Carton	/
	Net Weight (kg)	/
	Gross Weight (kg)	/
	Dimensions L x W x H (cm)	/
	Volume (cbm)	/

AD605



AD605-CBH



Main Features

- Support QC/PD fast charge
- Dual USB ports: USB-A & USB-C
- Maximum output of 30W
- EU & US plug available
- Short-circuit protection & over-current protection

Specifications

Input: 100-240 ~ 50/60Hz, 0.8A Max

Output:

USB-C: 5V ~ 3A, 9V ~ 3A, 12V ~ 2.5A, 15V ~ 2A, 20V ~ 1.5A 30W

PPS: 3.3-11V ~ 3A

USB-A: 5V ~ 3A, 9V ~ 2A, 12V ~ 1.5A 18W

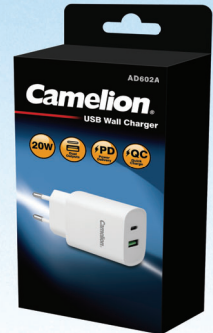
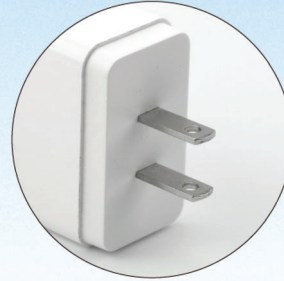
USB-C+USB-A: 5V ~ 3A

Packaging

Hanging Box	Plug:	EU / US
	Weight (g)	/
	Dimensions L x W x H (cm)	/
Inner Carton	Packs / Inner Carton	/
	Net Weight (kg)	/
	Gross Weight (kg)	/
	Dimensions L x W x H (cm)	/
Outer Carton	Packs / Carton	/
	Net Weight (kg)	/
	Gross Weight (kg)	/
	Dimensions L x W x H (cm)	/
	Volume (cbm)	/

USB Wall Charger

AD602A



AD602A-CBH

Main Features

- Support QC/PD fast charge
- Maximum output of 20W
- EU & US plug available
- Short-circuit protection & over-current protection

Specifications

Input: 100-240~ 50/60Hz 0.7A Max

Output: 20W

USB-C: 5V \equiv 3A, 9V \equiv 2.22A, 12V \equiv 1.67A 20W

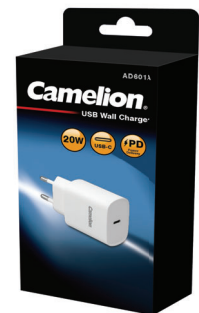
USB-A: 5V \equiv 3A, 9V \equiv 2A, 12V \equiv 1.5A 18W

USB-A+USB-C: 5V \equiv 3A 15W

Packaging

Hanging Box	Plug:	/
	Weight (g)	/
	Dimensions L x W x H (cm)	/
Inner Carton	Packs / Inner Carton	/
	Net Weight (kg)	/
	Gross Weight (kg)	/
	Dimensions L x W x H (cm)	/
Outer Carton	Packs / Carton	/
	Net Weight (kg)	/
	Gross Weight (kg)	/
	Dimensions L x W x H (cm)	/
	Volume (cbm)	/

AD601A



AD601A-CBH

Main Features

- Support PD3.0 fast charging
- Maximum output of 20W
- EU & US plug available
- Short-circuit protection & over-current protection

Specifications

Input: 100-240~ 50/60Hz, 0.7 Max

Output: 5.0V \equiv 3.0A, 9.0V \equiv 2.22A, 12.0V \equiv 1.67A 20W

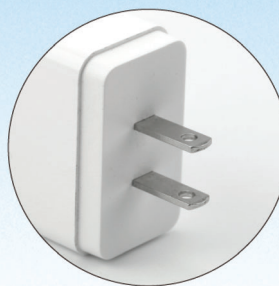
Packaging

Hanging Box	Plug:	/
	Weight (g)	/
	Dimensions L x W x H (cm)	/
Inner Carton	Packs / Inner Carton	/
	Net Weight (kg)	/
	Gross Weight (kg)	/
	Dimensions L x W x H (cm)	/
Outer Carton	Packs / Carton	/
	Net Weight (kg)	/
	Gross Weight (kg)	/
	Dimensions L x W x H (cm)	/
	Volume (cbm)	/

USB Wall Charger

AD585A

3.4A
Output



AD585A-CBH

Main Features

- Compatible with most tablets and smart phones
- Three USB ports to charge 3 devices at the same time
- Over-current and short-circuit protection

Specifications

Input: 100-240V~ 50/60Hz 0.6A Max
Output: 5V \equiv 3.4A (Max total)
 5V \equiv 2.4A (Each USB)

Packaging

Hanging Box	Plug:	EU / US
	Weight (g)	80
	Dimensions L x W x H (cm)	8 x 15 x 2.9
Inner Carton	Packs / Inner Carton	24
	Net Weight (kg)	/
	Gross Weight (kg)	/
	Dimensions L x W x H (cm)	38 x 31 x 9.2
Outer Carton	Packs / Carton	48
	Net Weight (kg)	3.84
	Gross Weight (kg)	4.46
	Dimensions L x W x H (cm)	39.5 x 32.5 x 20.5
	Volume (cbm)	0.0263

AD585T

3.4A
Output



AD585T-CBH

Main Features

- Small & Compact
- Three output ports
- Supports Type-C output
- Short-circuit protection
- Over-current protection

Specifications

Input: 100-240V~ 50/60Hz 0.6A Max
Output: 5V \equiv 3.4A(Max total)
 5V \equiv 2.4A(Each USB-A)
 5V \equiv 3.0A(USB-C)

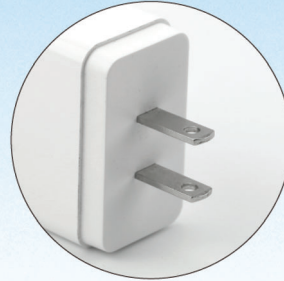
Packaging

Hanging Box	Plug:	EU / US
	Weight (g)	80
	Dimensions L x W x H (cm)	8 x 15 x 2.9
Inner Carton	Packs / Inner Carton	24
	Net Weight (kg)	/
	Gross Weight (kg)	/
	Dimensions L x W x H (cm)	38 x 31 x 9.2
Outer Carton	Packs / Carton	48
	Net Weight (kg)	3.84
	Gross Weight (kg)	4.46
	Dimensions L x W x H (cm)	39.5 x 32.5 x 20.5
	Volume (cbm)	0.0263

USB Wall Charger

AD581

1A
Output



AD581-HCB



Main Features

- Compatible with most tablets and smart phones
- Over-current and short-circuit protection

Specifications

Input: 100-240V~ 50/60Hz 0.5A

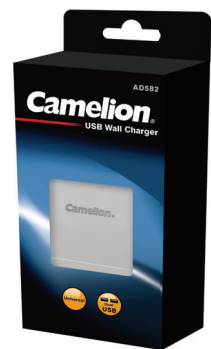
Output: 5V \square 1A

Packaging

Hanging Box	Plug:	EU / US
	Weight (g)	80
	Dimensions L x W x H (cm)	8 x 15 x 2.7
Inner Carton	Packs / Inner Carton	24
	Net Weight (kg)	/
	Gross Weight (kg)	/
	Dimensions L x W x H (cm)	36 x 31 x 9.2
Outer Carton	Packs / Carton	48
	Net Weight (kg)	3.4
	Gross Weight (kg)	4.3
	Dimensions L x W x H (cm)	37.7 x 32.5 x 21
	Volume (cbm)	0.0257

AD582

2.4A
Output



AD582-HCB



Main Features

- Compatible with most tablets and smart phones
- Dual USB port to charge two devices at the same time
- Over-current and short-circuit protection

Specifications

Input: 100-240V~ 50/60Hz 0.5A Max

Output: 5V \square 2.4A (Max total)

5V \square 2.4A (Each USB)

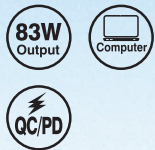
Packaging

Hanging Box	Plug:	EU / US
	Weight (g)	80
	Dimensions L x W x H (cm)	8 x 15 x 2.7
Inner Carton	Packs / Inner Carton	24
	Net Weight (kg)	/
	Gross Weight (kg)	/
	Dimensions L x W x H (cm)	36 x 31 x 9.2
Outer Carton	Packs / Carton	48
	Net Weight (kg)	3.4
	Gross Weight (kg)	4.3
	Dimensions L x W x H (cm)	37.7 x 32.5 x 21
	Volume (cbm)	0.0257

USB Car Charger

Camelion USB Car Chargers are some of the best-sized and easiest-to-use car chargers on the market today, providing power for your mobile devices whenever you're on the road.

DD833



DD803S-HCB



Main Features

- Power for laptop, tablet and most mobile devices
- 83W maximum output power
- Support QC/PD fast charge
- Dual-USB outputs for 2 devices fast charging at once
- Multi-level safety protection

Specifications

Input: 12-24V \pm 8A
Output: 18W + 65W
 USB-A: 5V \pm 3A, 9V \pm 2A, 12V \pm 1.5A
 USB-C: 5V \pm 3A, 9V \pm 3A, 12V \pm 3A, 15V \pm 3A, 20V \pm 3.25A

Packaging

Blister	Weight (g)	/
	Dimensions L x W x H (cm)	/
Inner Carton	Packs / Inner Carton	/
	Dimensions L x W x H (cm)	/
Outer Carton	Packs / Carton	/
	Net Weight (kg)	/
	Gross Weight (kg)	/
	Dimensions L x W x H (cm)	/
	Volume (cbm)	/

DD832



DD803A-HCB



Main Features

- 48W maximum output power
- Support QC/PD fast charge
- Dual-USB outputs for 2 devices fast charging at once
- Multi-level safety protection

Specifications

Input: 12-24V \pm 5A
Output: 18W + 30W
 USB-A: 5V \pm 3A, 9V \pm 2A, 12V \pm 1.5A
 USB-C: 5V \pm 3A, 9V \pm 3A, 12V \pm 2.5A

Packaging

Blister	Weight (g)	/
	Dimensions L x W x H (cm)	/
Inner Carton	Packs / Inner Carton	/
	Dimensions L x W x H (cm)	/
Outer Carton	Packs / Carton	/
	Net Weight (kg)	/
	Gross Weight (kg)	/
	Dimensions L x W x H (cm)	/
	Volume (cbm)	/

USB Car Charger

DD831

38W
Output



DD831-HCB



Main Features

- 38W maximum output power
- Support QC/PD fast charge
- Dual-USB outputs for 2 devices fast charging at once
- Multi-level safety protection

Specifications

Input: 12-24V \equiv 4A

Output: 18W + 20W

USB-A: 5V \equiv 3A, 9V \equiv 2A, 12V \equiv 1.5A

USB-C: 5V \equiv 3A, 9V \equiv 2.22A, 12V \equiv 1.67A

Packaging

Blister	Weight (g)	/
	Dimensions L x W x H (cm)	/
Inner Carton	Packs / Inner Carton	/
	Dimensions L x W x H (cm)	/
Outer Carton	Packs / Carton	/
	Net Weight (kg)	/
	Gross Weight (kg)	/
	Dimensions L x W x H (cm)	/
	Volume (cbm)	/

DD822C

4.8A
Output



DD822C-DB



Main Features

- 4.8A USB port allows fast charging.
- Dual USB ports to charge two devices simultaneously
- Compatible with tablets, smartphones and other mobile devices
- Over-current and short-circuit protection

Specifications

Input: 12V - 24V \equiv 3A Max

Output: 5V \equiv 4.8A (Max total)

5V \equiv 2.4A (Each USB)

Packaging

Blister	Weight (g)	28
	Dimensions L x W x H (cm)	10.7x 17.1 x 3.5
Inner Carton	Packs / Inner Carton	24
	Dimensions L x W x H (cm)	35.5 x 31.5 x 18.0
Outer Carton	Packs / Carton	48
	Net Weight (kg)	1.91
	Gross Weight (kg)	2.53
	Dimensions L x W x H (cm)	36.5 x 32.5 x 38
	Volume (cbm)	0.0451

USB Car Charger

DD823A

2.4A
Output



Main Features

- Compatible with most mobile devices
- Dual USB ports to charge two devices simultaneously

Specifications

Input: 12V-24V \equiv 1.3A Max
Output: 5V \equiv 2.4A(Max total)
 5V \equiv 2.4A(Each USB)



DD823A-HCB

Packaging

Blister	Weight (g)	66
	Dimensions L x W x H (cm)	10.7x 17.1 x 3.5
Inner Carton	Packs / Inner Carton	24
	Dimensions L x W x H (cm)	35.5 x 31.5 x 18.0
Outer Carton	Packs / Carton	48
	Net Weight (kg)	3.2
	Gross Weight (kg)	4
	Dimensions L x W x H (cm)	36.5 x 32.5 x 38
	Volume (cbm)	0.0451

DD822A

2.4A
Output



Main Features

- Compatible with most portable devices
- Maximum output up to 2.4 A
- Dual USB ports
- LED working indicator
- 4 levels of safety protection:
 - a) Short-circuit protection
 - b) Over voltage protection
 - c) Over-current protection
 - d) Under voltage protection

Specifications

Input: 12-24V \equiv 1.3A
Output: 5V \equiv 2.4A (Max total)
 5V \equiv 2.4A (Each port)



DD822A-HCB

Packaging

Blister	Weight (g)	28
	Dimensions L x W x H (cm)	10.7x 17.1 x 3.5
Inner Carton	Packs / Inner Carton	24
	Dimensions L x W x H (cm)	35.5 x 31.5 x 18.0
Outer Carton	Packs / Carton	48
	Net Weight (kg)	1.91
	Gross Weight (kg)	2.53
	Dimensions L x W x H (cm)	36.5 x 32.5 x 38
	Volume (cbm)	0.0451

USB Car Charger

DD803S



DD803S-HCB



Main Features

- Compatible with most portable devices
- USB port & LED indicator
- 4 levels of safety protection:
 - a) Short-circuit protection
 - b) Over voltage protection
 - c) Over-current protection
 - d) Under voltage protection

Specifications

Input: 12-24V $\overline{\text{---}}$ 1.0A

Output: 5.0V $\overline{\text{---}}$ 1.0A

Packaging

Blister	Weight (g)	/
	Dimensions L x W x H (cm)	10.7x 17.1 x 3.5
Inner Carton	Packs / Inner Carton	24
	Dimensions L x W x H (cm)	/
Outer Carton	Packs / Carton	48
	Net Weight (kg)	/
	Gross Weight (kg)	/
	Dimensions L x W x H (cm)	/
	Volume (cbm)	/

DD803A



DD803A-HCB



Main Features

- Compatible with most portable devices
- USB port & LED indicator
- 4 levels of safety protection:
 - a) Short-circuit protection
 - b) Over voltage protection
 - c) Over-current protection
 - d) Under voltage protection

Specifications

Input: 12-24V $\overline{\text{---}}$ 1.5A

Output: 5.0V $\overline{\text{---}}$ 2.4A (Max total)
5.0V $\overline{\text{---}}$ 2.4A (Each USB)

Packaging

Blister	Weight (g)	/
	Dimensions L x W x H (cm)	10.7x 17.1 x 3.5
Inner Carton	Packs / Inner Carton	24
	Dimensions L x W x H (cm)	/
Outer Carton	Packs / Carton	48
	Net Weight (kg)	/
	Gross Weight (kg)	/
	Dimensions L x W x H (cm)	/
	Volume (cbm)	/

Empower Every Possibility with More Energy Solutions

Camelion has been providing energy solutions to customers worldwide for over 25 years. As one of the most influential energy solution brands in the global market, Camelion is now actively operating in over 120 countries and regions in collaboration with our business partners. Our mission is to satisfy our customers with the finest quality products, customer-friendly price and thoughtful services. Whenever and wherever you are in need, we are always ready for your help with all the energy solutions you need. Just try us out!



Camelion Battery Co., Ltd.

705, Cyber Times Tower A, Tian'an Cyber Park,
Shenzhen, Guangdong, China

Camelion Enterprises Ltd.

Block 8, 3/F, Sunray Industrial Centre,
610 Cha Kwo Ling Road, Kowloon, Hong Kong

For more information about Camelion, please visit www.camelionbattery.com

Camelion is a registered trademark of Camelion Battery Co., Ltd.
All other brand names are trademarks or registered trademarks of the respective companies.
Copyright ©2023 Camelion Battery Co., Ltd. All rights reserved.



www.camelionbattery.com

CA-PS-2023